



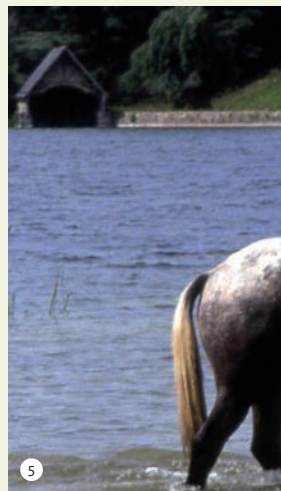
# Discover Glaslough Village

its places, people & charm...

Perfect for stopping, shopping, meeting, greeting & eating...

# Welcome to Glaslough

“Glaslough is an unspoiled village brimming with heritage and an unsurpassable community spirit. Everyone is welcome here, equally cherished for the gifts they bring to our community.”







- 1 Castlevue Antiques
- 2 Oakland Centre
- 3 Dining at Castle Leslie Estate
- 4 Victorian Treatment Rooms at Castle Leslie Estate
- 5 Equestrian Centre at Castle Leslie Estate
- 6 The Mallon Studio



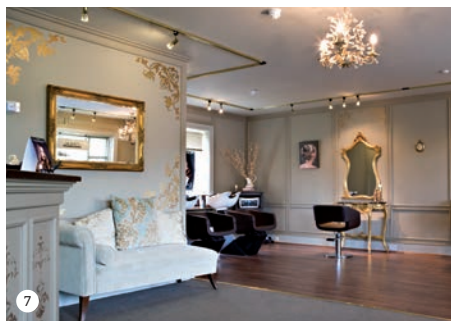
## Things to see & do

Glaslough has something for everyone. You'll find a host of spectacular attractions that will cater for your every wish including shopping, dining, pampering and relaxing or action packed activities for the more adventurous. The choice is yours. Get a taste of everything Glaslough has to offer.

- |   |   |    |                                       |
|---|---|----|---------------------------------------|
| 1 | Castleview Antiques                               | 9  | MK Woodcrafts                         |
| 2 | Oakland Centre                                    | 10 | Ambledown Cottage Tearooms & Pizzeria |
| 3 | Dining at Castle Leslie Estate                    | 11 | The Coachhouse and Olde Bar           |
| 4 | Victorian Treatment Rooms at Castle Leslie Estate | 12 | Paddy McQuaid Bike Hire               |
| 5 | Equestrian Centre at Castle Leslie Estate         | 13 | Cloncaw Equestrian Centre             |
| 6 | The Mallon Studio                                 | 14 | Treanors Daybreak & Coffee Loft       |
| 7 | Cameo Hair  | 15 | Willow Tree Cottage B&B               |
| 8 | Pillar House Hotel                                | 16 | Glaslough Studio & Gallery            |
|   |   | 17 | Glaslough Chocolate Co.               |

● Arts & Crafts  
 ● Activities  
 ● Pamper  
 ● Community  
 ● Food & Drink





7 *Cameo Hair*  
8 *Pillar House Hotel*  
9 *MK Woodcrafts*

## 1 CASTLEVIEW ANTIQUES

Find something unique, unusual, beautiful and timeless with Castleview Antiques. Offering an eclectic range of antiques from furniture, clocks, porcelain and paintings, to lighting and collectables.

CONTACT *Barry McKenna* T: +353 (0)87 6736082  
E: [barrymckenna.antiques@gmail.com](mailto:barrymckenna.antiques@gmail.com)

## 2 OAKLAND CENTRE

The Oakland Centre and park play host to a number of entertaining events throughout the year. The Oakland Centre is the perfect venue for any theatrical or musical event. Inquisitive nature explorers will be delighted by the Nature Trail and Insect Hotel situated towards the back of the park.

## 3 DINING at Castle Leslie Estate

Castle Leslie Estate is the ideal place to relax and enjoy the best of classic Irish cooking. At The Lodge, enjoy casual dining in Conor's Bar or restaurant style dining at the 2 AA Rosette award winning Snaffles Restaurant. Or, if you fancy a spot of Afternoon Tea a visit to the Castle is a must! (advance booking is essential).

CONTACT T: +353 (0)47 88100 [www.castleleslie.com](http://www.castleleslie.com)

## 4 VICTORIAN TREATMENT ROOMS

at Castle Leslie Estate

The Victorian Treatment Rooms are located in the Lodge at Castle Leslie Estate. With seven treatment rooms, a relaxation area and an outdoor hot tub, it's the perfect place to leave you feeling refreshed and revitalised.

CONTACT T: +353 (0)47 88533 [www.castleleslie.com](http://www.castleleslie.com)

## 5 EQUESTRIAN CENTRE at Castle Leslie Estate

Enjoy one of Ireland's best horse riding locations. Facilities include a 1,000-acre private estate, 300 cross country jumps, 21 miles of meandering bridleways, a mile long all-weather gallop, 56 stables, virtual horse for beginners, indoor arena with cross country fences. Adult and children's lessons also available.

CONTACT T: +353 (0)47 88535 [www.castleleslie.com](http://www.castleleslie.com)

## 6 THE MALLON STUDIO

The Mallon Gallery displays the work of Joan and Joe Mallon. Joan is a renowned artist and illustrator specializing in surrealist imagery with "tongue 'n cheek" observations of village life. Joe is a well known ceramic artist. His studio displays an interesting collection of dogs, birds, vases, dishes and lamps, and accepts commissions. Workshops also available.

CONTACT *Joe & Joan Mallon* T: +353 (0)47 88363  
*Joe M:* +353 (0)87 6230317

## 7 CAMEO HAIR

Cameo Hair is a luxurious boutique-style hair salon offering an extensive product range such as Inoa colour and L'Oréal along with some wonderful hair treatments to meet all your styling requirements. The salon has an excellent reputation and is well renowned for its creative and inspirational up-styles. For special occasions, or just that little lift.

CONTACT *Kim McNaughton* T: +353 (0)47 88804

## 8 PILLAR HOUSE HOTEL

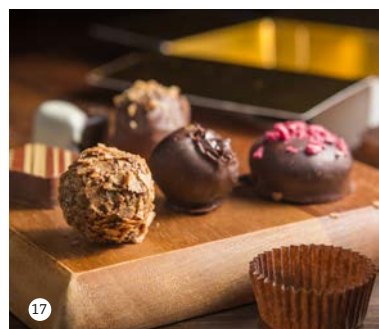
Located at the gates to Castle Leslie Estate, the Pillar House is a quaint, family run hotel/pub. With friendly staff and great craic, we are known for our warm welcome, relaxed ambience and good food, rounded off with a unique character and charm.

CONTACT *Brendan McKenna* T: +353 (0)47 88125

## 9 MK WOODCRAFTS

Handmade and crafted by Mark McKenna in his workshop, MK Woodcrafts showcases a collection of furniture pieces ranging from mirrors and clocks to signature coffee tables.

CONTACT *Mark McKenna* M: +353 (0)87 6483952  
[www.mkwoodcrafts.com](http://www.mkwoodcrafts.com)



- 10 Ambledown Cottages
- 11 The Coachhouse & Olde Bar
- 12 Paddy McQuaid Bike Hire
- 13 Cloncau Equestrian Centre

- 14 Treanors Daybreak & Coffee Loft
- 15 Willow Tree Cottage B&B
- 16 Glaslough Studio & Gallery
- 17 Glaslough Chocolate Co.

### 10 AMBLEDOWN COTTAGES

During the day indulge yourself with our fresh scones, deep-filled apple pies and hand-made treats. Gossip with old friends over a cup of freshly brewed coffee or take a break with a hearty bowl of homemade soup. In the evening, bring along a bottle of wine and join us in our pizzeria or order a pizza to take home.

CONTACT *Jeremy Herron* T: +353 (0)47 88393

### 11 THE COACHHOUSE & OLDE BAR

This impressive stone building situated in the heart of the village, The Coachhouse & Olde Bar retains many of its original features and was the first singing lounge in Co. Monaghan. Visit us for live music every Saturday night and traditional music every second Friday night.

CONTACT *Ron & Diane* T: +353 (0)47 88106  
[www.facebook.com/CoachHouseOldeBar](http://www.facebook.com/CoachHouseOldeBar)

### 12 PADDY MCQUAID BIKE HIRE

The beautiful countryside around Glaslough makes the area a perfect destination for a glorious day's cycling. Drawing on his wealth of local knowledge Paddy can suggest a cycle trail that's perfect just for you, from energetic outings, to a more relaxing ride or an informative tour for all the family.

CONTACT *Paddy McQuaid* T: +353 (0)47 88108

### 13 CLONCAW EQUESTRIAN CENTRE

Cloncau Equestrian Centre offers a wide variety of equestrian activities for horse lovers of all ages. Our services and facilities include indoor and outdoor arenas, riding lessons, hacking, and a cross country course can be hired for schooling or competitions. Cloncau Equestrian Centre is AIRE and BHS approved.

CONTACT *Geraldine Bellew* T: +353 (0)87 975 1009  
[www.cloncau.com](http://www.cloncau.com)

### 14 TREANORS DAYBREAK & COFFEE LOFT

Treanors Daybreak is a family run business situated on the main street of Glaslough providing customers with fresh groceries, full lotto agency, café upstairs and lots of special promotions.

CONTACT *Roisin*  
[roisinstreanor@gmail.com](mailto:roisinstreanor@gmail.com) T: +353 (0)47 88153

### 15 WILLOW TREE COTTAGE B&B

Willow Tree Cottage is a quaint family run B&B located right in the centre of the village. A warm and hearty welcome awaits you and guests are made to feel very much at home from the very moment they arrive. Upon arrival you will be shown to the living room and served complimentary refreshments to help you settle in.

CONTACT *Claire*  
[wilowtreecottage@me.com](mailto:wilowtreecottage@me.com)  
 T: +353 (0)87 740 1600  
[www.glasloughbedandbreakfast.com](http://www.glasloughbedandbreakfast.com)

### 16 GLASLOUGH STUDIO & GALLERY

Glaslough Studio & Gallery is run by Neal Greig, a renowned Irish artist. You can also learn to paint or perfect your technique by working with Neal. His workshops are designed to accommodate the novice through to the aspiring artist.

CONTACT [nealgreig@hotmail.co.uk](mailto:nealgreig@hotmail.co.uk) T: +353 (0)87 620 7967  
[www.nealgreig.com](http://www.nealgreig.com)

### 17 GLASLOUGH CHOCOLATE CO.

The Glaslough Chocolate Company is nestled in the quaint village of Glaslough. It was established in 2013 by chocolatier Trish Murphy-Thom. Trish offers handmade artisan chocolates using the finest Belgian chocolate & quality local ingredients.

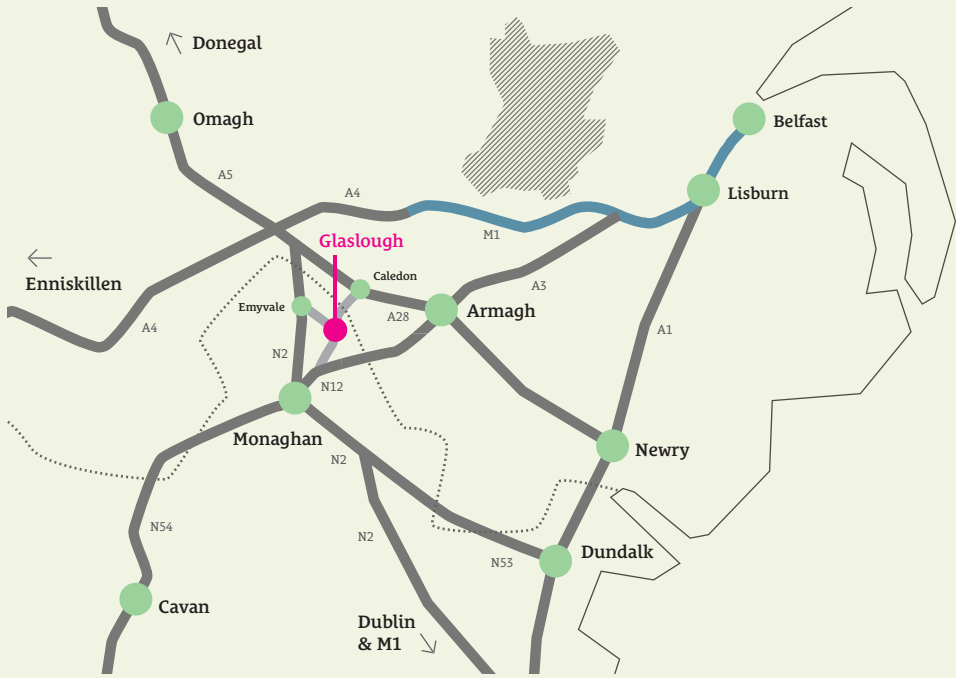
CONTACT [glasloughchocolatecompany@gmail.com](mailto:glasloughchocolatecompany@gmail.com)  
 T: +353 (0)87 091 4321



A vertical photograph of a lush green landscape. In the foreground, a large, dark tree trunk stands prominently on the right side. The ground is covered in dense, vibrant green vegetation, including various leafy plants and grasses. In the middle ground, a large, well-manicured hedge runs across the frame. Behind the hedge, several tall, mature trees with dense green foliage are visible, some with thick trunks. The background shows a soft-focus view of a forest or parkland under a bright, slightly overcast sky. The overall scene is peaceful and natural.

The name Glaslough is derived from the Irish translation 'calm or green lake'. Our picturesque, magical village is located on the outskirts of Castle Leslie Estate in north Co. Monaghan. Surrounded by ancient woodlands and glittering lakes, it is a village filled with impressive historical and architectural features, beautifully stone cut period buildings and a unique, vibrant and welcoming community.





## Getting here

Only 80 minutes from Dublin and 60 minutes from Belfast. Glaslough village is situated off the N2 just 10 minutes north of Monaghan Town, 15 minutes from Armagh City and 5 minutes from Caledon.

### CONTACT

*Please see each of the businesses in Glaslough for individual contact information and opening hours.*

For more information please visit  
[www.glasloughvillage.com](http://www.glasloughvillage.com)

